

February 2008

Gulliver's Doggie Daycare

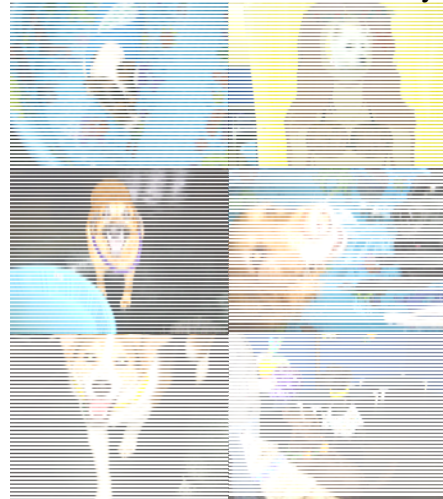


DOGBITS

Gulliver's Corner

Hi Friends! I had an awesome time at the Luau! We had so many friends come in all decked out in their party gear! Sebago came complete with bikini and grass skirt, and Frye was looking quite handsome in his Hawaiian shirt (even if it was a bit tight.) Thielson wore a bright purple flower lei, my favorite color! Speedie and Gordon the little dogs went all out, Speedie was ready to catch some waves while Gordon was more content partying on shore! My fellow Dane Biggie showed off his superior beach ball skills, although the colorfully dressed George gave him a run for his money! Riley snow and Joshua Pierce thought the decorations were great, so great that Amanda had to explain several times that they weren't edible. Sorry Guys, I know those little fish looked scrumptious! Shadow and Brooke made the biggest splashes in the pools, while Chex and Olivia preferred napping blankets instead of water in their pool. Alfie got a chance to show off his muscles, as did Marley and Lexi. Chione, Di, Keelynn, Luna and Holly took turns as the party princess. Everyone enjoyed the tropical illusion, even the staff got into the groove! Sara showed some pups how to enjoy the pools, and managed to keep her straw hat away from mischievous canines, despite some tricky decoration incidents involving large cardboard palm trees! Patti and Sam helped everyone pose for pictures, and Amanda, Luke and Sara ran the cameras. Lisa made sure the partiers didn't get TOO wild, and Aspen and the rest of the staff made sure we got

Plenty of time back out in the winter wonderland between party sessions! We enjoyed the special attention with towels after swimming! It was an extra fun daycare day and I sure am looking forward to next month's party! I'm already working on my costume! By the way, does anyone have any purple tights I could borrow?
--Gully



Special Announcement!

Thursday, February 21st is **Superhero Thursday!** Bring your pooch to the coolest dog party yet! Any dogs here at Gully's on the 21st will get to show off their superpowers with heroic games, costume contests, and world- saving skills! Don't worry! Every super hero needs an evil counter part! Don't think your mischievous pup is best suited on the side of the "good guys?" NO problem! Every superhero needs an evil counter part!

Watch at www.doggiedaycare.com and in our lobby for more details!

Tails From the Goofy Group

Hey folks, some January we had huh? I have been trying to get out with the team for some training, but we have to travel a bit to find good snow. Oh well, I'm keeping in shape with my buddies in the goofy group! Marcus, Beckett, George and Amy are excellent at keeping things hopping in the goofy pen! We are all looking forward to being Super Heroes! Or maybe even Villains! Vader the black Shepherd pup doesn't even need to get into character! I think I'm ready to leap tall buildings in a single bound and rescue whole cities from evil. Maybe even the world, after all, I am SUPER SCHUMACHER!!!! Up, Up and AWAY!!!!!!!!!!!!



Winter Wormies and Spring Yuckies...

The time has come again for renewing town dog licenses. As a result of this we know many of you will be in contact with your veterinarians getting vaccinations updated, or maybe getting paperwork in order. This is also a good time to think about getting your dog's stool checked for internal parasites. Many dogs enjoy digging around in the frozen ground and investigating things with their mouths. Unfortunately, they don't always find the most sanitary stuff under there. Thaws create pools of

possibly contaminated water, as well as uncovering things like rodent carcasses or the feces of other animals. During times of thaw and into spring, it is common for the dog population in general to experience a rise in G.I related issues. These could range in cause, symptoms, severity and treatment. If your dog exhibits diarrhea, vomiting, loss of appetite, or lethargy it is best to keep him or her home. Skipping a meal to rest the digestive tract, and then small frequent feedings of a bland diet, such as rice and boiled boneless chicken usually helps things recover. Make sure your dog stays hydrated, especially in cases of diarrhea and vomiting. See "checking for dehydration." Prolonged, unusual, or severe symptoms should be assessed and treated by a veterinarian.

Check for Dehydration

A relatively simple way to see if your dog is hydrated enough is to lift a bit of loose skin near the base of the neck. Pull it up a bit and release it. Does it snap back down quickly, or does it remain raised and slowly sink back into place? If it snaps back, your dog is probably sufficiently hydrated. If not, you may be dealing with dehydration. If the dog is willing to drink, allow drinking, but keep it slow, so as not to induce vomiting the water back up. If the dog is unwilling to drink, get in contact with your vet, a dehydrated dog whom isn't drinking may need I.V. fluids. Another test is to feel your dog's gums and lips. Are they wet and slimy (good.) Or are they tacky and only moist? (Not a good sign.) Dehydrated dogs are often, but not always, lethargic and listless. Dogs lacking proper hydration will also have dark yellow urine, while a well-hydrated dog should have almost clear or pale yellow urine.